

Vertex Demo Quick Start Guide

1. Hardware & software

Assure that the demo PC is compatible with the minimal requirements in Appendix A.

2. Video device

Advise DOG-Sec's third party hardware list for compatible video devices integrated with the system. The list can be found in the "Download Center" of our website at: www.dog-sec.com

3. Installing Vertex demo system

- Setup applications must run under administrator privileges.
- Server & system will be installed as services with automatic startup.

Software prerequisites (included on the demo folder)

- Microsoft .NET Framework 1.1
- Microsoft .NET Framework 1.1 SP1
- Microsoft .NET Framework 1.1 SP1 Security update
- Microsoft .NET Framework 2
- Microsoft .NET Framework 2 SP1
- Windows Installer 3.1

Installation

1. Execute "*vertex_demo.ms*" and follow the instructions to install the system application.
2. Setup application installs MSSQL Express 2005 automatically.
3. Click "Yes" to restart the PC after the installation is completed.

NOTE: Before using the system you must set your firewall to allow "XDRSystem.exe" (uses port 1000) and "XDRNode.exe" (uses port 2000). In windows firewall you should add these programs to the exceptions list.

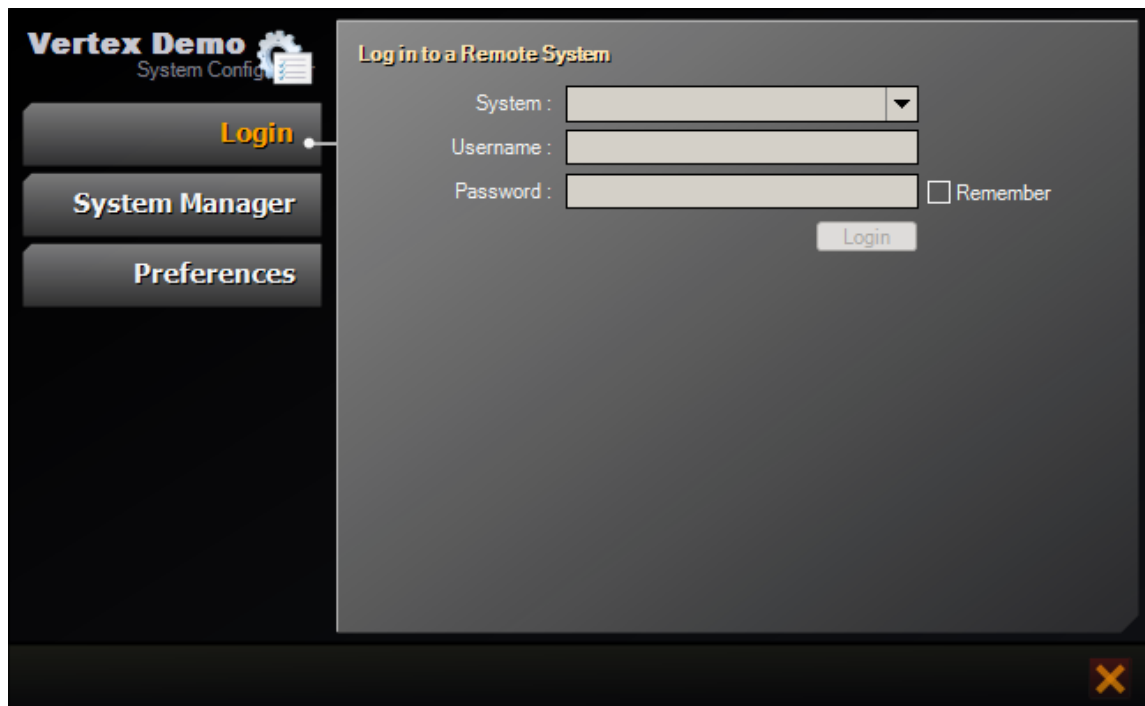
- When using the system's web server, the default port (80) and port 554 (for mobile access) must also be added to the exceptions list.
- To configure other firewall products advise the relevant help files.

Vertex Demo Quick Start Guide

4. Configurator – Setup your site

4.1. Login

When you first open the system Configurator, you will be asked to login with a user account received with the system.



1. Click the “System Manager” option from the left pane.
2. Type a name for the demo system.
3. Type the demo system’s IP address in the Primary Address field (it can also be the loopback, i.e.: 127.0.0.1) and click Add.
4. Click the “Login” option from the left pane.
5. Type “admin” for user name and “1234” for password.
NOTE: To increase system security, please change the default password from the “Accounts” tab.
6. Mark the “Remember” option to save the password for subsequent logins.
7. Click *Login*.

Once you are logged into the Configurator, you can change the admin account password and create new user accounts and profiles. Once you create user accounts, these users will be able to log into the system with their assigned user names and passwords.

Vertex Demo Quick Start Guide

4.2. Demo session

Have a technical/presale personal contact DOG-SEC's presale team for a demo session (schedule at least two hours).

4.3. Uploading a license

1. When logging in the system for the first time, the *About* tab will open automatically, in order to issue a valid license please supply the "System Unique ID" to DOG-SEC.
2. Once the license is received click *Browse* button, select the license file and click *Open* button.
3. Click the *Upload File* button. If the license file is legitimate, you will see "OK" next to the "License Status" field.
4. The system is ready and can be configured.

4.4. Add device

1. In the *Device Manager* tab click on the *Device* dropdown menu and select *Add New* (usually selected by default).
2. Select the device manufacturer from the dropdown list.
3. Select the device model: the dropdown list contains a list of device models (based on your manufacturer selection) supported by the system.
4. Give the device a name of your choice.
5. Fill in the device's IP (irrelevant in case of a frame grabber card). If you don't know the device IP address you can scan the network for available devices using the *Scan* button then select the desired device from the list. The device details will be filled automatically.
6. If the device's IP address must be changed (Bosch only): select the device from the scan list, type the new IP in the address field at the bottom of the window, click *Apply* and click *Scan* again.
7. Select the storage drive, on which the device media files will be stored.
8. Click *Add*.

NOTE: Scanning for a Panasonic device must take place within 20 minutes after the device was restarted.

Channel Profiles

The channel profiles are sets of video parameters applied when configuring the channel; you can change the various parameters:

Bitrate – The average number of bits that one second of video will consume. Higher bitrate means bigger file size and generally better video quality, while lower

Vertex Demo Quick Start Guide

bitrate means lower file size but worse video quality. The choice of bitrate is generally determined by bandwidth considerations.

Resolution – The video resolution is indicated in CIF - Common Intermediate Format.

GOP – (Group of Pictures) In video encoding, a group of pictures, or GOP, specifies the order in which intra-frames and inter-frames are arranged.

Framerate – The video frame rate is indicated in FPS - Number of frames per second.

5. Control Center

Login

You can login to the Control Center using each of the previously configured accounts.

NOTE: You cannot login simultaneously to the Configurator and Control Center using the same account.

1. Open the *System Overview* tree on the left panel.
2. Double-click or drag any channel to any frame in the main panel to watch the live video.
3. Continue operating the system according to the Control Center manual or basic & advanced reference guides.

Vertex Demo Quick Start Guide

Appendix A

Minimal and recommended hardware specification

Vertex demo PC (Server + System + Client)

Hardware	Minimal	<ul style="list-style-type: none"> • Pentium 4 3.4GHz • 1GB DDR 400 • Standard 10/100 Network Adapter • USB 2.0 Port • Display Adapter : GeForce 6200
	Recommended	<ul style="list-style-type: none"> • Pentium Core 2 Duo 2.4GHz • 2GB DDR2 • Standard 10/100/1G Network Adapter • USB 2.0 Port • Display Adapter: GeForce 8500 or better
Software	Windows XP Pro SP2 MS .NET Framework 1.1 + SP1 MS .NET Framework 2.0 + SP1 Windows Installer 3.1	

AGENT-VI Software & Hardware Requirements

Vi-System Server (for 100 cameras)	<ul style="list-style-type: none"> • CPU – Core2Dou 2.66 GH (or similar), RAM – 2 GB • Hard drive – 50 GB • Os- Windows XP Professional, Windows Server 2003/2008
Vi-System Configuration & Monitoring	<ul style="list-style-type: none"> • CPU – Core2Dou 2.66 GH (or similar), RAM – 2 GB • Hard drive – 50 GB • Os- Windows XP Professional, Windows Server 2003/2008
Server Scalability	Analytics server can be easily added to support more cameras stronger processors can support more cameras on one server