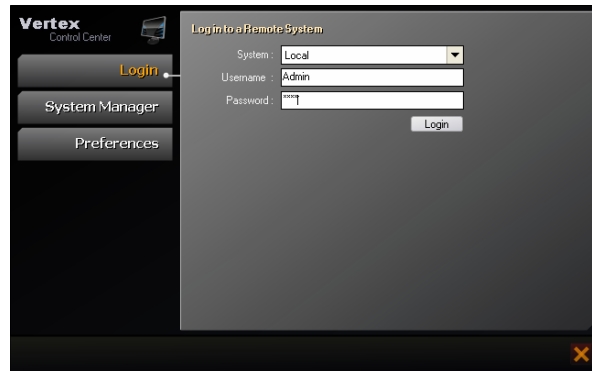


# Basic Reference Guide

## Login

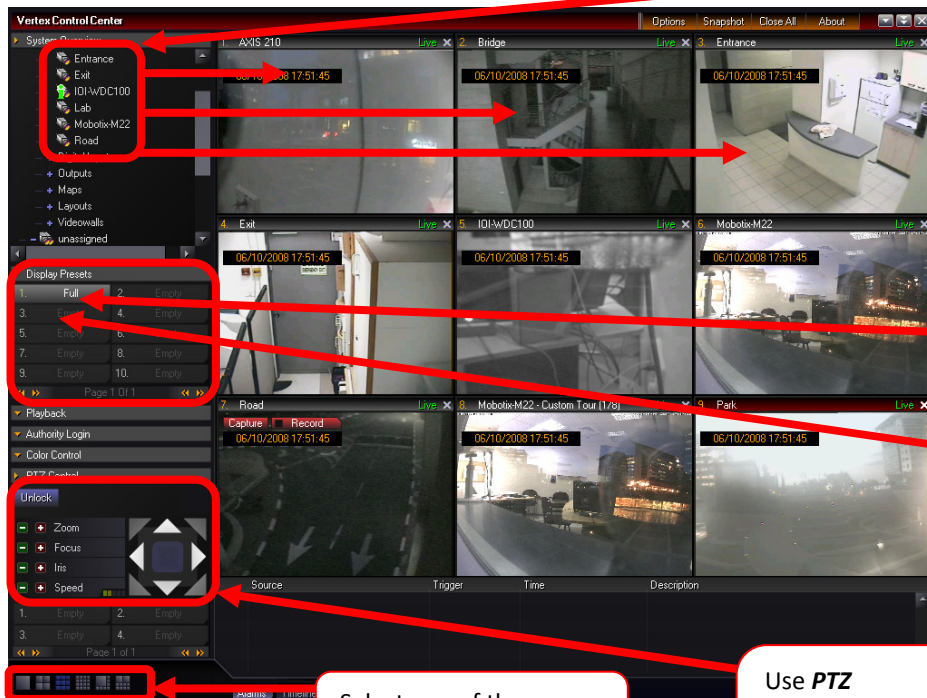
Double-click the **Control Center** icon  located on your desktop.

Type a user name and a password.



Click **Login** button to log in to the system.  
The main Control Center window appears.

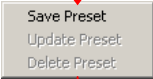
## Live View



Drag cameras from the **Devices** tree.

Click to recall a display preset.

Right click to save a display preset.

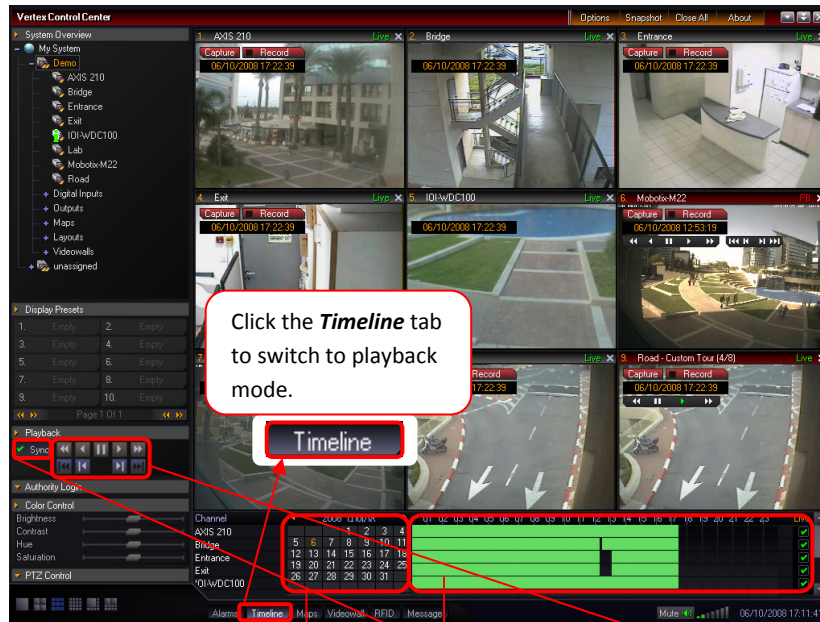


Select one of the system display layouts.

Use **PTZ Control** to manipulate PTZ cameras.

# Basic Reference Guide

## Playback View




Select a date with recordings.

		1	2	3
4	5	6	7	8
9	10	11	12	13
14	15	16	17	18
19	20	21	22	23
24	25	26	27	28
29	30			

Dates with red background have recordings.

Click to switch all cameras to a specific time.



Use **Sync** mode to manipulate all cameras. Click to switch to non-sync mode to manipulate cameras separately.

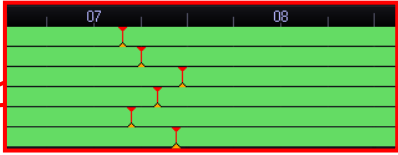
Use playback controls to manipulate recorded video for all cameras.

Select dates with recordings.

					1
26	27	28	29	30	31
26	27	28	29	30	31
26	27	28	29	30	31
26	27	28	29	30	31
26	27	28	29	30	31

Dates with red background have recordings.

Click to switch each camera to a specific time.



Use **non-sync** mode to manipulate cameras independently.

Use playback controls to manipulate recorded video for each camera independently.

